

AA **REGGIANA
RIDUTTORI**
PLANETARY REDUCTION **GEARS**



A BRAND OF REGGIANA RIDUTTORI



For 50 years
we have been passionately
dedicating ourselves to producing
planetary gears and wheel gears
made entirely in Italy.
Reggiana Riduttori
is a member of Interpump Group.

COMPANY PROFILE

CP





 **REGGIANA
RIDUTTORI**
PLANETARY REDUCTION **GEARS**

C

The company

The enthusiasm which has represented a real driving force for us over the past 50 years has strong and deep roots



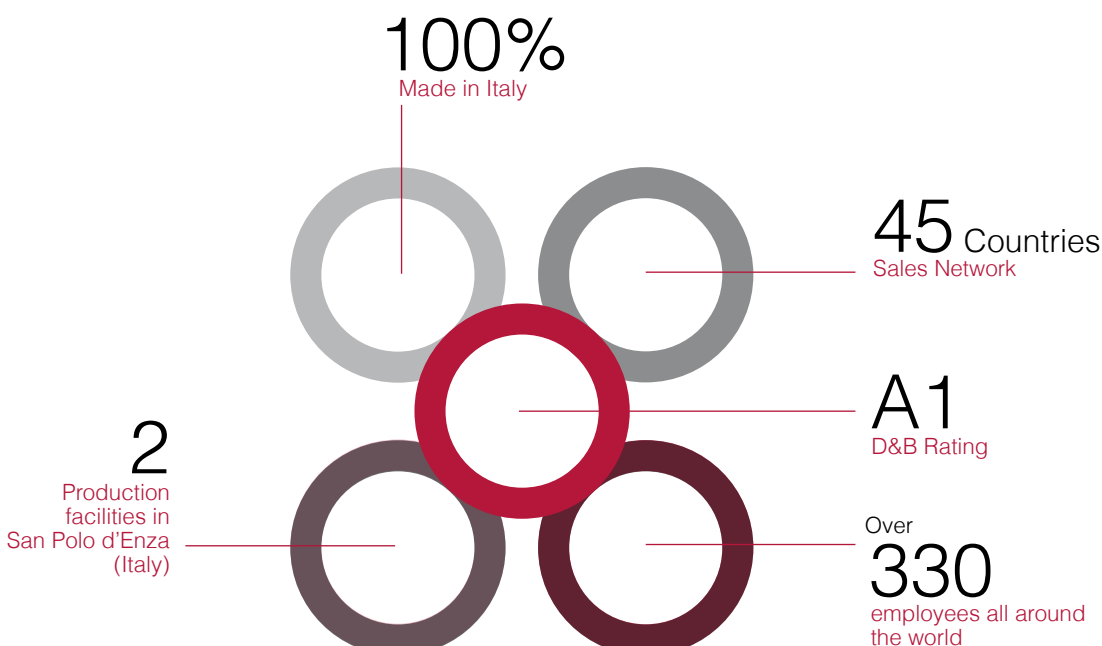


Since 1973, we have been committed to the production of **planetary reduction gears and wheel gears**, faithful to an entirely Made in Italy philosophy.

Our Reggiana Riduttori brand is strongly linked to the surrounding district: in our San Polo d'Enza headquarters, in the province of Reggio Emilia, all the various stages of the production cycle, from the purchase of top-quality raw materials through to assembly and storage, are characterised by a high degree of innovation, fuelled by ongoing investments in research and development.

That same Italian enthusiasm which has left its mark worldwide thanks to three production facilities, 13 subsidiaries and a closely-knit network of distributors. Our daily challenge is to maintain that quality approach which has always distinguished us, reconciling it with latest-generation production methods and with a thirty-year long internationalisation process.

Since 2019 we have been part of the Interpump Group and in 2021 we expanded our range of action with the incorporation of Berma company, a well-known manufacturing concern which specialises in the production of gearboxes designed for agricultural applications.



A member of



G

The Group

A member of



Key players in the industry,
part of the Interpump group

INTERPUMP GROUP STRUCTURE

1

Water

Interpump
Pratissoli
General Pump
Hammelmann
NLB
Inox hip

2

Hydraulics

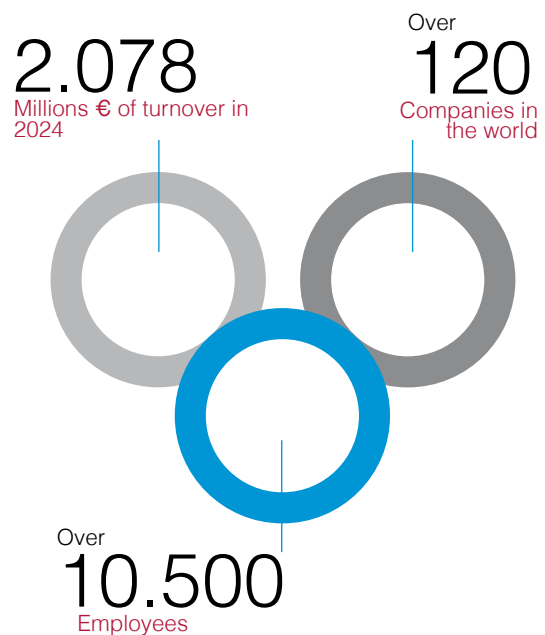
Walvoil
Hydrocontrol
Galtech
White Drive
Interpump Hydraulics
Hydroven
Oleodinamica Panni
Contarini Leopoldo
Muncie Power
Hydra Dyne Tech
American Mobile



Interpump Group S.p.A. is the world's largest manufacturer of high-pressure piston pumps for applications in numerous sectors and one of the major groups in the hydraulic industry operating on international markets.

The Interpump Group was established in 1977 in S. Ilario d'Enza (RE) by Fulvio Montipò and has been listed on the Milan Stock Exchange since 1996.

Daily commitment to reconciling an artisan approach with latest-generation manufacturing technologies has enabled Reggiana Riduttori to set the benchmark for the mechanical engineering and power transmission sector. Becoming part of the **Interpump Group** was the natural evolution of a development path characterized by value and which spurred us to face with great determination a future of constantly changing horizons.



3

Fluid Conveyance

IMM Hydraulics
Gs-Hydro
Tubiflex
Tekno Tubi

4

Flow processing

Bertoli
Mariotti & Pecini
Macfuge
Inoxpa
Fluinox

5

Power Transmissions

Reggiana Riduttori
Transtecno
DZ
Berma

R

The Range

The state of the art
in power
transmissions





PLANETARY

2000 SERIES I PLUS SERIES

Modular planetary reduction gears

T2max Nm=1.200-10.000.000
Ratio=3.4-5061

WHEEL & TRACK GEARS



RRWD I RRTD

Compact wheel & track drives with single, double or triple stage.

T2max Nm=1.000-50.000
Ratio=5-179



RREDL I RREDW I RREDT

Compact and light electric wheel/track gears.

T2max Nm=700-7.000
Ratio=19-174

SLEWING, WINCH & MIXER



SLEWING SERIES

Gearboxes for slewing.

T2max Nm=8.500-560.000
Rapporti=11,26-2.496

W SERIES

Winch drives.

T2max Nm= 10.600-537.000
Ratio=12,24-1.904

MIXER SERIES

Gearboxes for feed mixers.

T2max Nm=13.600-92.000
Ratio=11,58 - 118,12

In collaborazione con

TRANSTECNO
the modular gearmotor



HELICAL & COMBINED

Helical & bevel helical gearboxes

T2nom Nm=2.400-130.200
Helical Ratio =1,11-520,70
Bevel helical Ratio =4,91-406,89

Combined gearboxes

T2max Nm=390.000-4.300.000
Ratio=90-600

V SERIES - Combined planetary and worm speed gearboxes

T2max Nm=1.200-26.500
Ratio=324-2.765

BERMA LINE

Gearboxes and components for manure spreaders & chain floor trailers.

T2max Nm=450-9.700
Ratio=1,9-38,7



AP

Markets

Marine & Offshore



Industry



Mobile



Agriculture & Forest



Waste
management



Sugar Industry



Mining



P

Production

Pg

12

The future is here.
A longstanding smart factory vocation

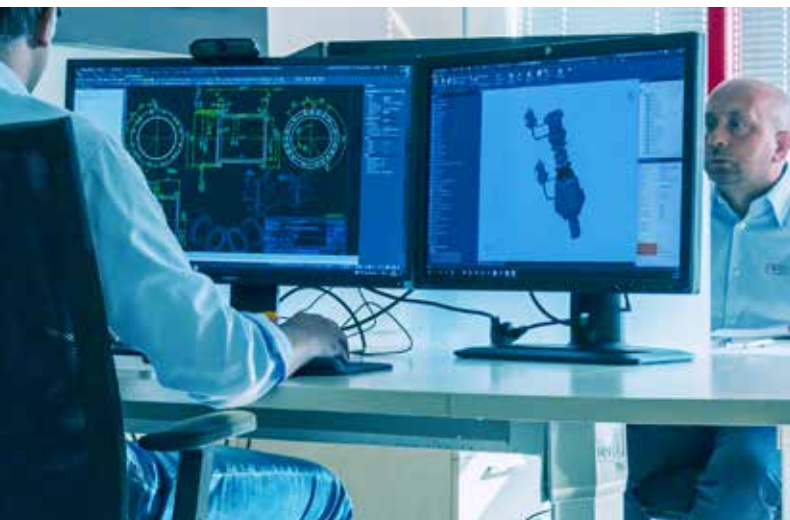


Pg

13



Ever since our company was first established, **we have firmly believed in technology and innovation**, and we are continuing along this path, as can be seen from our production facilities equipped with state-of-the-art machinery.



We extensively apply different digital technologies within our production processes, in **order to monitor production efficiency in real time** and intervene promptly whenever necessary, thus providing the flexibility that a constantly changing market requires while complying with ever higher sustainability standards.

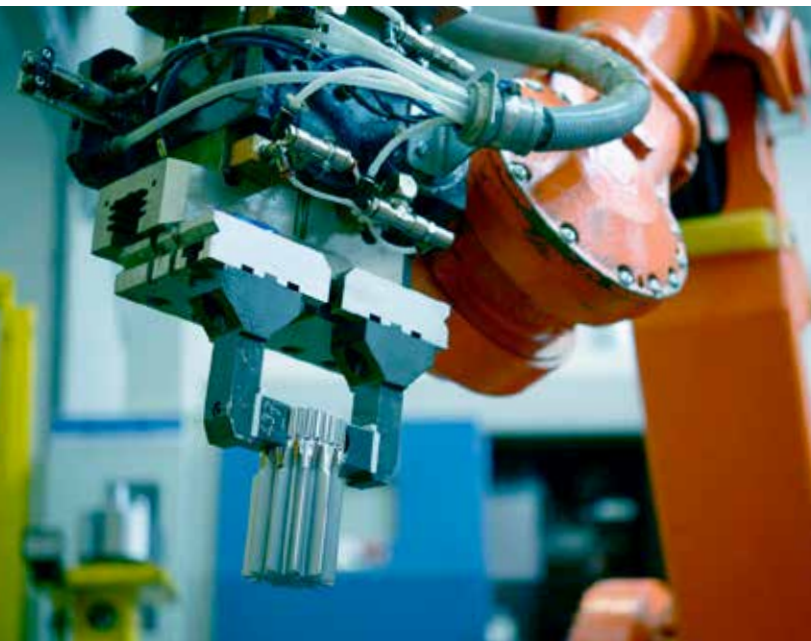


P



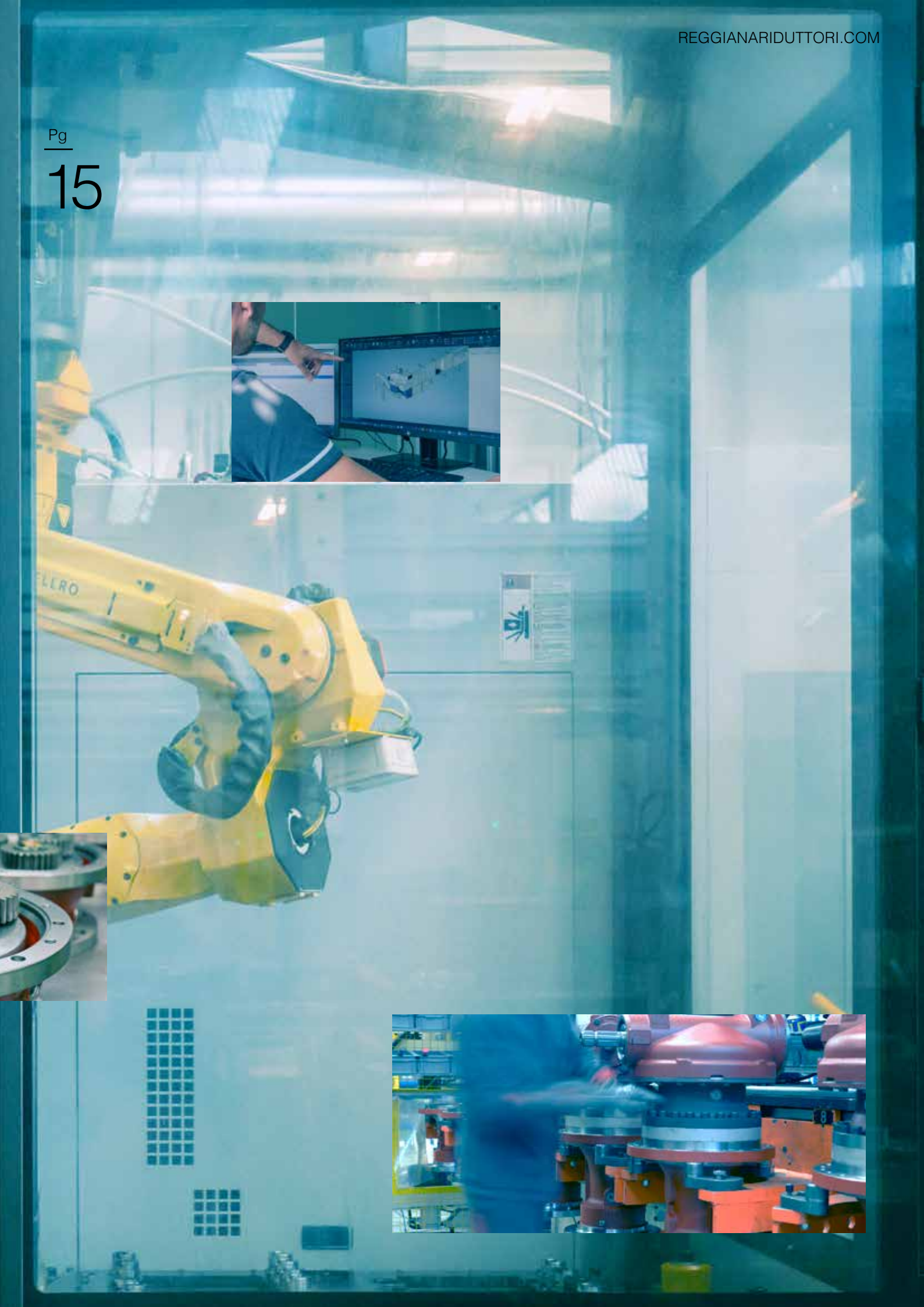
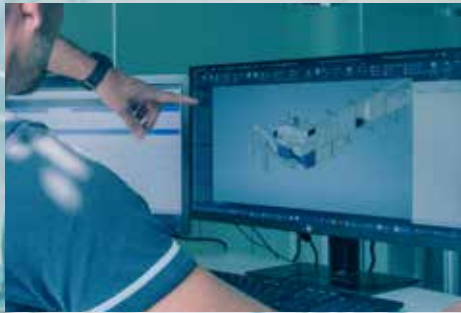
Pg
14

We continue to invest in order to play a prominent role in the new frontier of **Industry 4.0**: a scenario in which we enhance our experience, combining it with the future.



Pg

15





Quality management system

A vision and a daily
commitment





From raw materials to testing, our **Quality Control system** adds value to each stage of the manufacturing process, thereby maximizing finished-product reliability.

- **Controlled and certified** raw materials
- **Personnel accredited** by international reference bodies
- **Quality objectives** aligning with international standards
- The entire **manufacturing process** takes place in San Polo d'Enza (RE) facilities
- **In-house** metrology room and metallography laboratory controls as part of the production process
- **Process audits** conducted by our personnel along the entire subcontracting chain
- **Final testing on 100%** of the products before shipment to the customer.
- **Guaranteed traceability** of materials along the entire supply chain
- Reggiana Riduttori's Quality System is DNV **ISO 9001** certified
- Dedicated **calibration laboratory** inside the Quality Department



Our gearboxes are
**DNV GL standard DNVGL
 ST-0378-DNVGL-OS-E101
 IMO SOLAS 1974 certified**



M

Pg
18

Made-to-measure

Precision and flexibility
are our winning
features

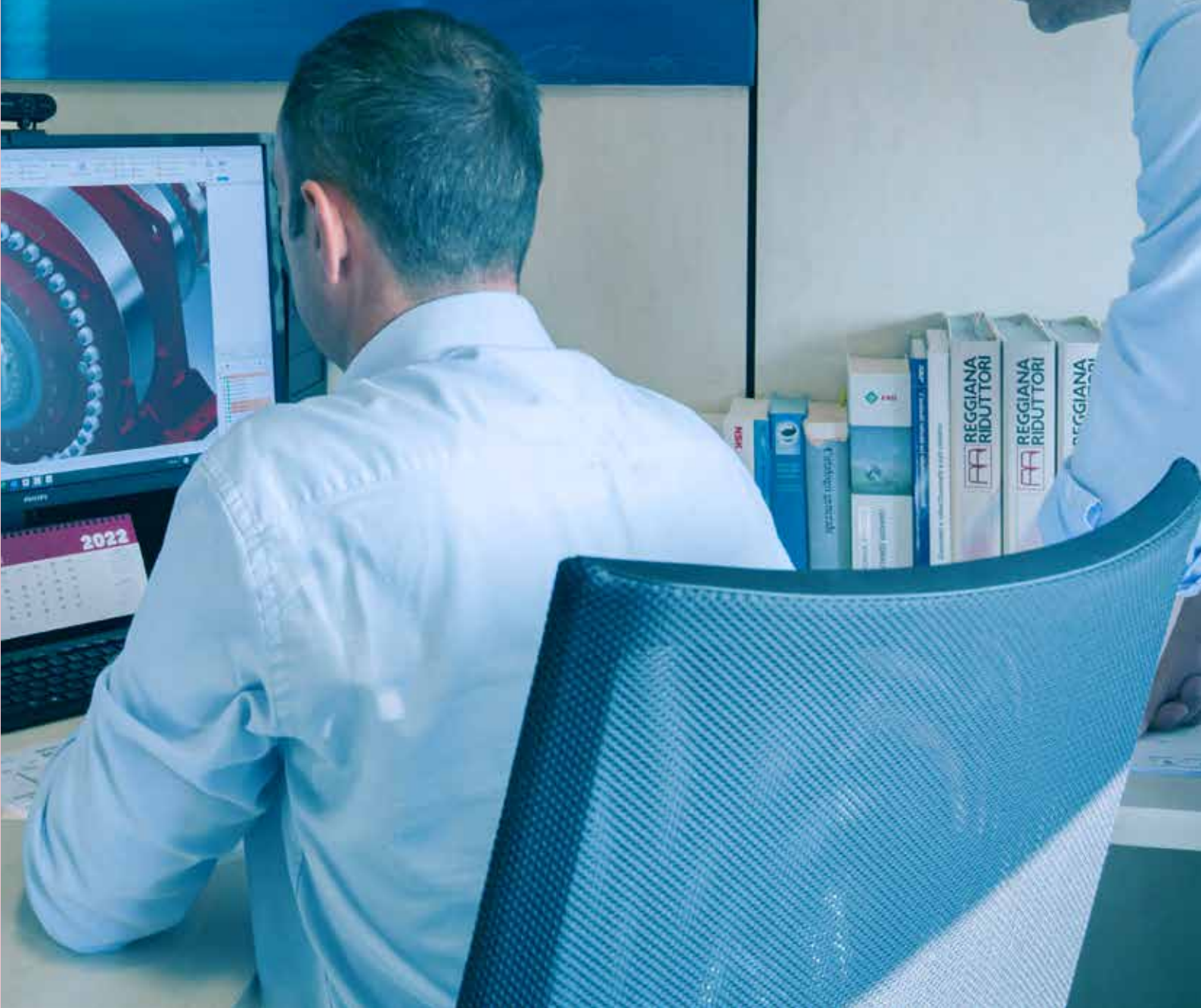


Pg

19

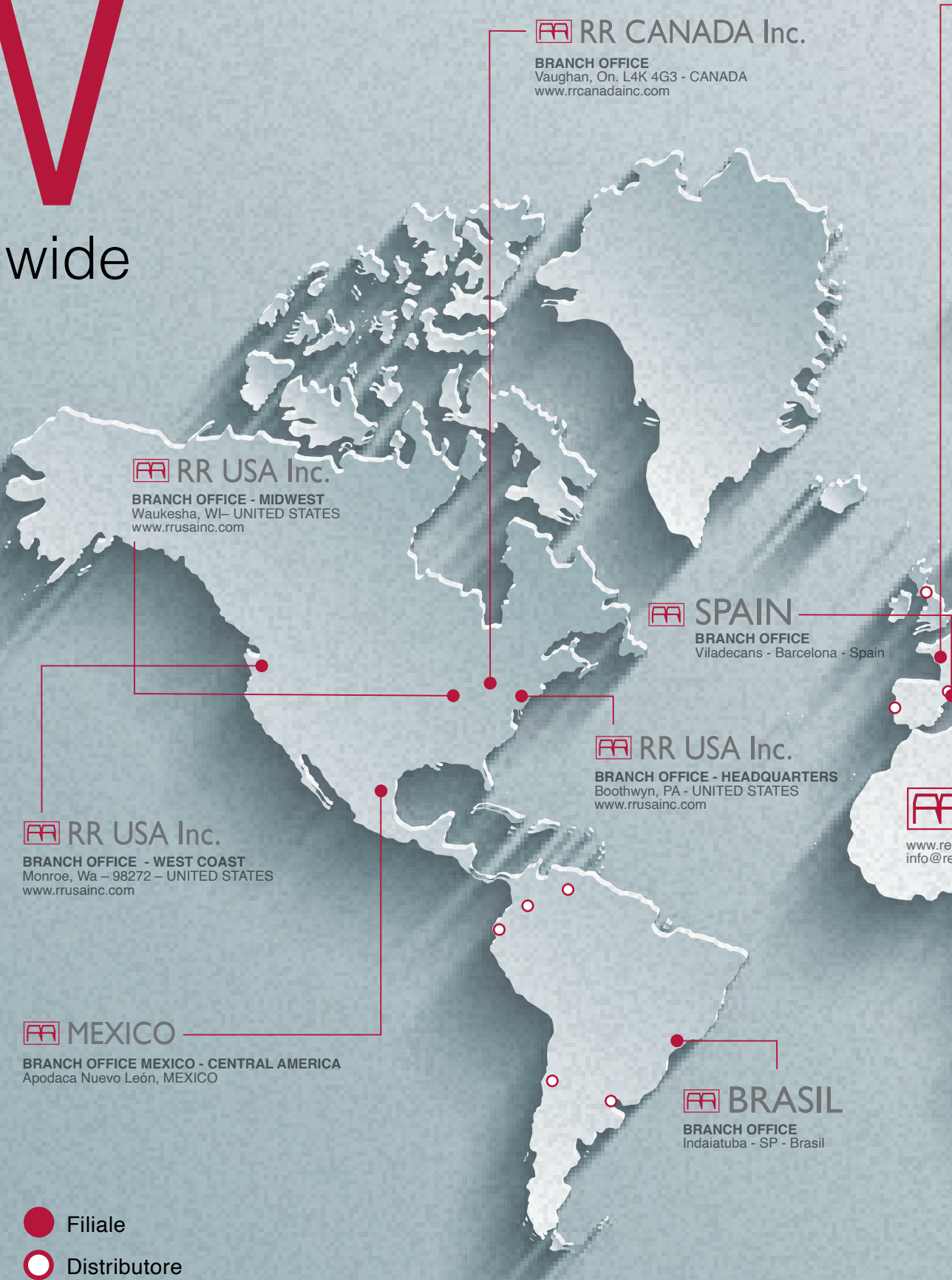


Listening to our customers' needs and **designing and implementing bespoke solutions** are the activities we are most passionate about: we can count on high product quality standards and a dynamic business structure, capable of understanding the needs of the individual customer and providing the right product for every application situation.



W

Worldwide



RR CANADA Inc.

BRANCH OFFICE
Vaughan, On. L4K 4G3 - CANADA
www.rrcanadainc.com

RR USA Inc.

BRANCH OFFICE - MIDWEST
Waukesha, WI- UNITED STATES
www.rrusainc.com

RR SPAIN

BRANCH OFFICE
Viladecans - Barcelona - Spain

RR USA Inc.

BRANCH OFFICE - HEADQUARTERS
Boothwyn, PA - UNITED STATES
www.rrusainc.com

RR USA Inc.

BRANCH OFFICE - WEST COAST
Monroe, Wa - 98272 - UNITED STATES
www.rrusainc.com

RR MEXICO

BRANCH OFFICE MEXICO - CENTRAL AMERICA
Apodaca Nuevo León, MEXICO

RR BRASIL

BRANCH OFFICE
Indaiatuba - SP - Brasil

Filiale

Distributore

RR FRANCE

BRANCH OFFICE
Thouare Sur Loire - FRANCE
www.rrfrance.fr

RR GERMANY

BRANCH OFFICE
Waiblingen - GERMANY

RR HOLLAND

BRANCH OFFICE
Oosterhout - NETHERLANDS
www.rrholland.nl

RR SLOVAKIA

BRANCH OFFICE
Zvolen - SLOVAKIA
www.rrslovakia.sk

INDIA

SALES OFFICE
Hosur - INDIA

RR CHINA

BRANCH OFFICE
Hangzhou City -
Zhejiang Province - CHINA

**REGGIANA
RIDUTTORI**

reggianariduttori.com
reggianariduttori.com

SOUTH AFRICA

SALES OFFICE
Johannesbug - RSA

RR PACIFIC

BRANCH OFFICE
Victoria - AUSTRALIA
www.rrpacific.com





reggianariduttori.com



A member of





Headquarter

Via Martiri di Marzabotto 7
42020 S.Polo D'Enza (RE)
Reggio Emilia, Italy
REGGIANARIDUTTORI.COM

Ph. +39 0522 259111
info@reggianariduttori.com
PEC: reggianariduttori@legalmail.it



A member of

